



WOMEN'S CHRISTIAN COLLEGE

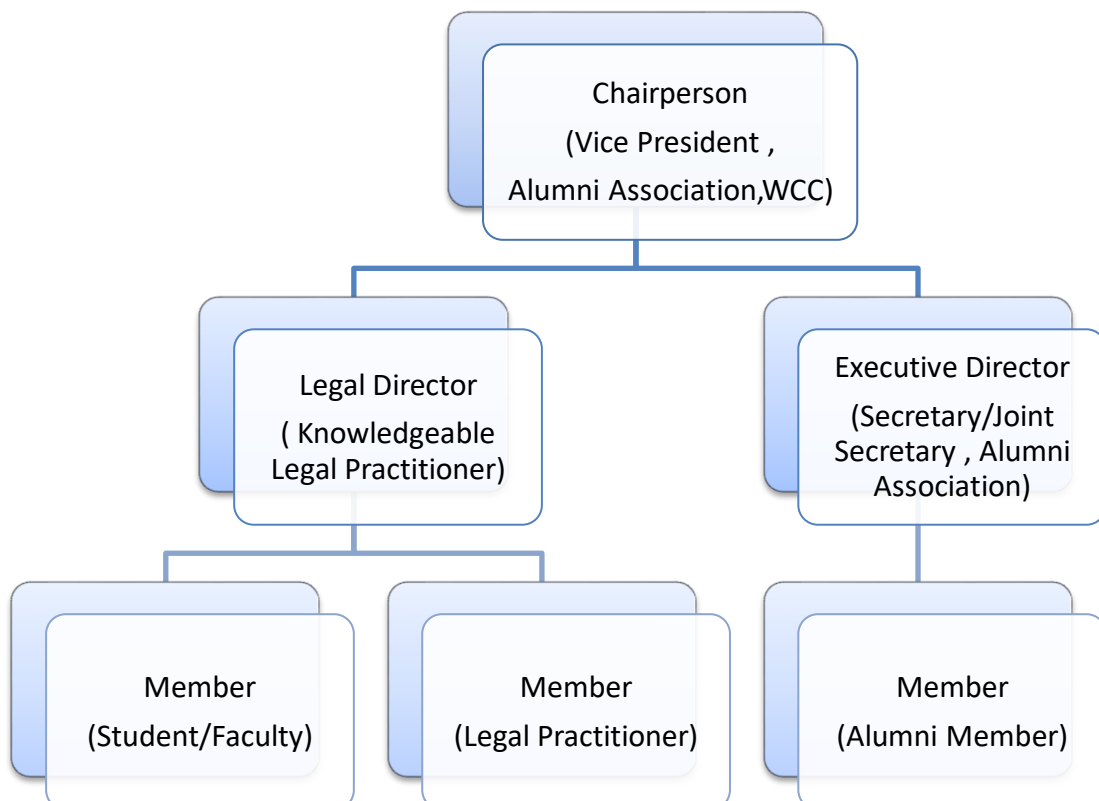
ALUMNI ASSOCIATION

6, GREEK CHURCH ROW EXT, KALIGHAT, KOLKATA-700026

Legal Aid Cell

The Legal aid Cell of the College is an initiative of the Alumni Association of Women's Christian College, (and **One of It's kind as not many Alumni Associations of Colleges take initiative of such order**) under the active guidance of the College Principal & the Knowledgeable and veteran Legal Experts from the Calcutta Bar. With the sharp rise of the general problems that call forth the intervention of law & the helpless conditions of the students, it was decided upon to begin the journey with the idea of enabling the students and empowering them with the basic awareness tools. The cell is active since 22nd September, 2018. It has been undertaking programmes and activities to generate awareness amongst the students of the College (All Women).

Composition Of The Cell





WOMEN'S CHRISTIAN COLLEGE

ALUMNI ASSOCIATION

6, GREEK CHURCH ROW EXT, KALIGHAT, KOLKATA-700026

Services Offered by The Cell

The Cell offers the following services to the students and faculty members of the College

- **Free legal Aid**
- **Preventive Measures**
- **Remedial Active Support**
- **Liaising with the Legal Experts**
- **Drafting of The Complaints, etc. for the students(Free of Cost)**
- **Free Clinical Legal Counseling basic legal Education**
- **Awareness Enhancement Programmes**
- **Free Legal Assistance for all & periodic trainings for students who are active**
- **Privy Assistance for Confidential Cases**

General Working Frequency

The legal Cell looks forward to holding of camps and events to reach out to the students and the faculty members of the college on a quarterly basis in order to enable and empower the students with Legal First Aid.

Notice To the Students

The students of the College were informed about and invited to the Inaugural programme to make them aware of the opening and functioning of the cell.

Corpus Fund

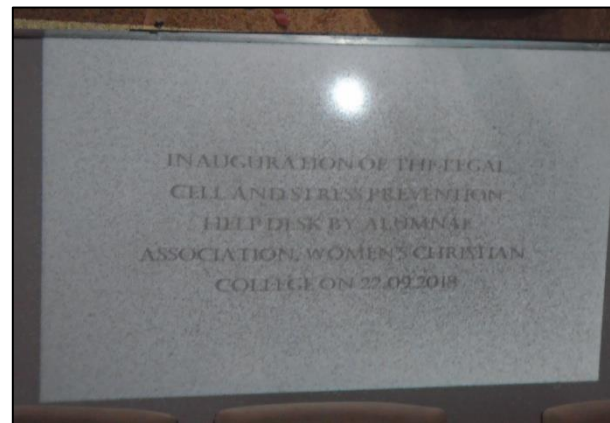
The esteemed members of the Alumni Association contributed on building a corpus fund for the functioning of the Legal Cell and decided to enhance the fund for extending free services to the stakeholders as far as practicable.



WOMEN'S CHRISTIAN COLLEGE

ALUMNI ASSOCIATION

6, GREEK CHURCH ROW EXT, KALIGHAT, KOLKATA-700026





WOMEN'S CHRISTIAN COLLEGE

ALUMNI ASSOCIATION

6, GREEK CHURCH ROW EXT, KALIGHAT, KOLKATA-700026





WOMEN'S CHRISTIAN COLLEGE

ALUMNI ASSOCIATION

6, GREEK CHURCH ROW EXT, KALIGHAT, KOLKATA-700026